

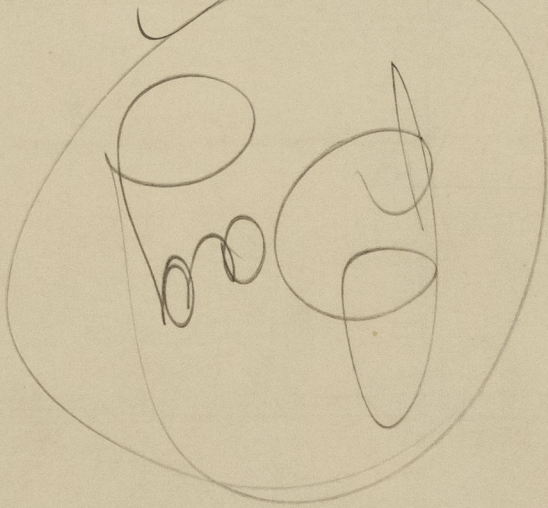


21

General Argt

5/2 A.M. 10. now Eugene Vinke

Rotterdam. 22.9.48.



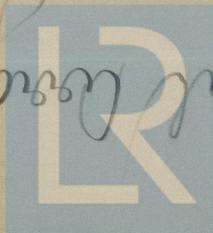
RETAIN

23 SEP 1948

Rotterdam

5/2 A.M. 10.

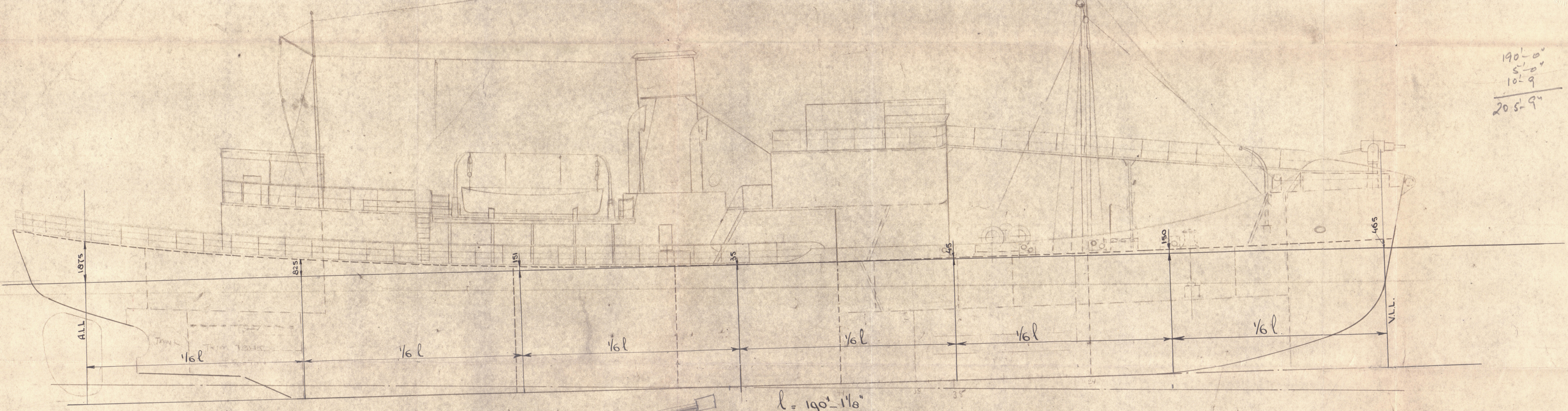
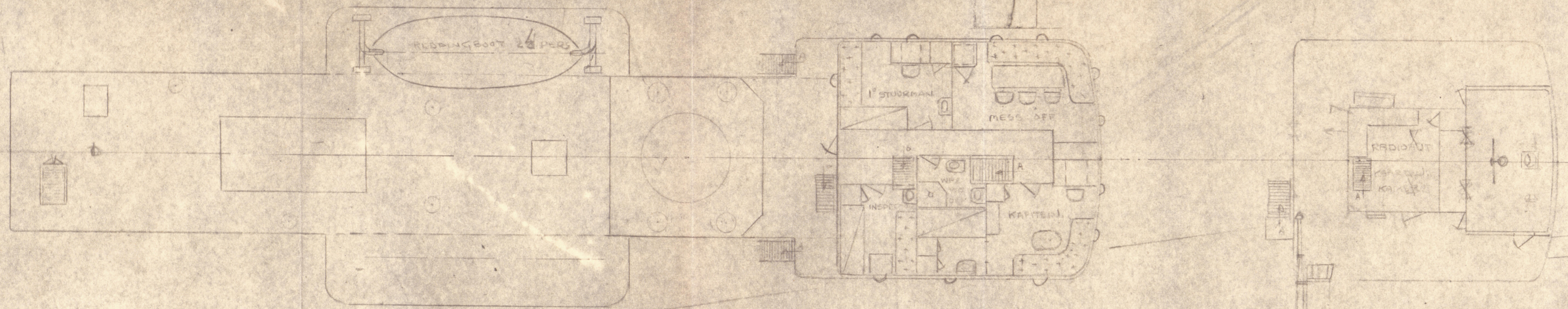
General Argt.



© 2020

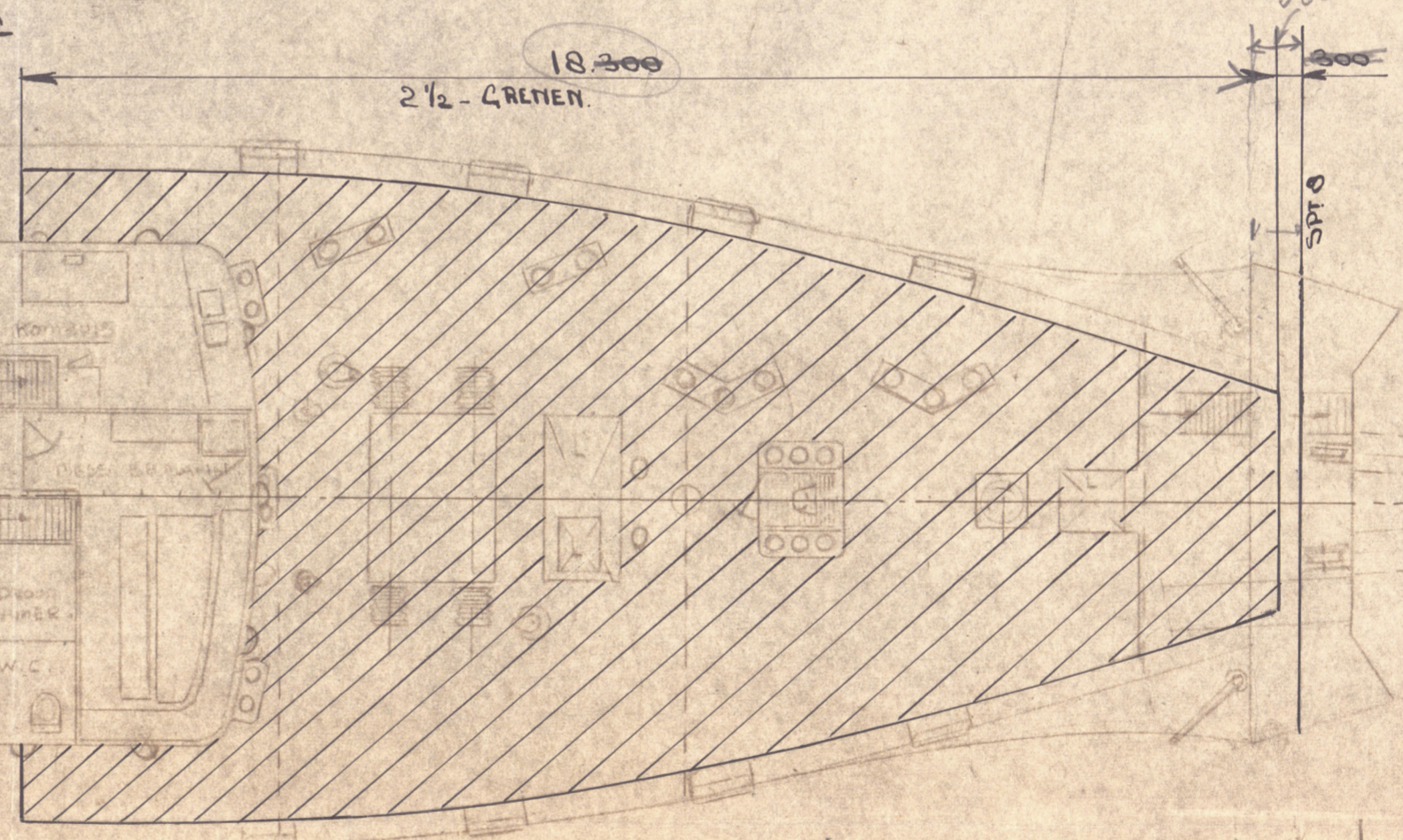
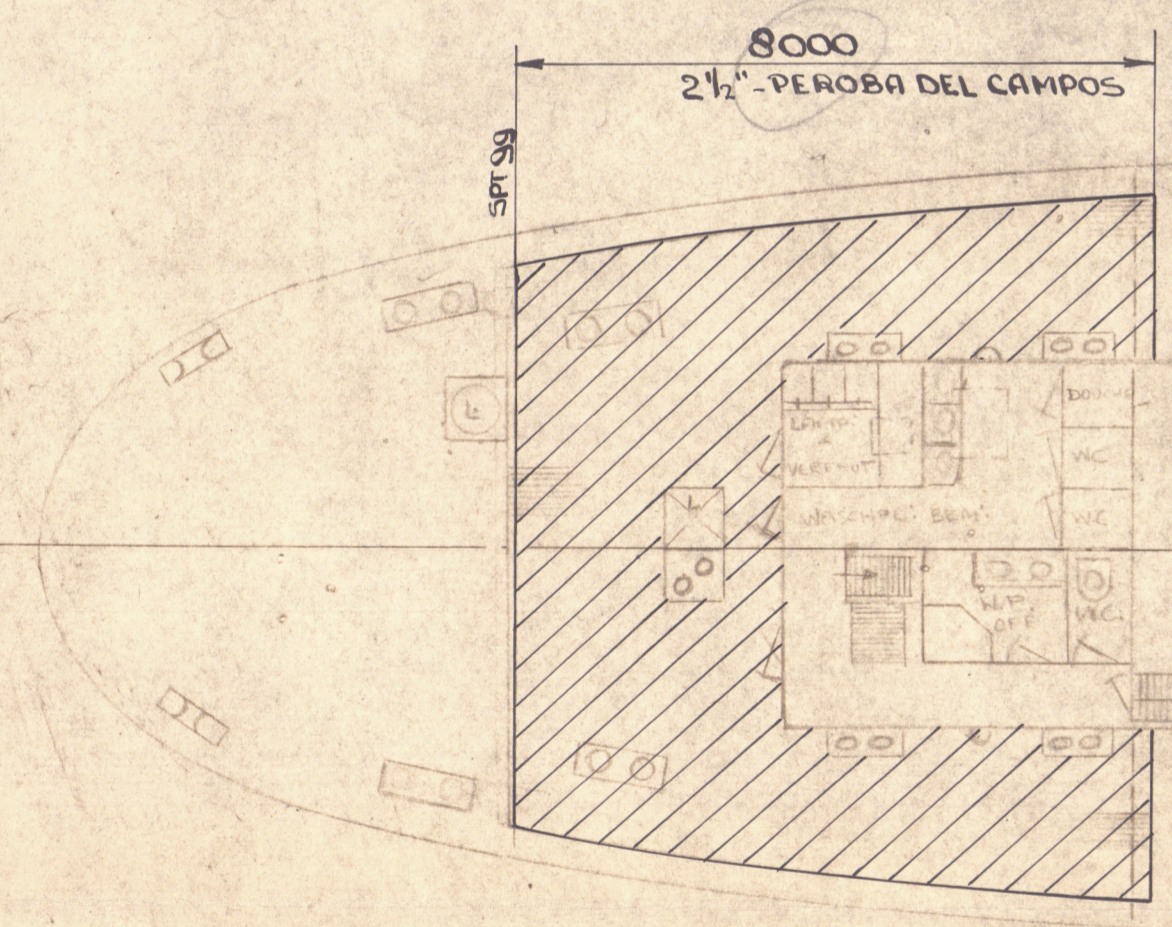
Lloyds Register Foundation

003948-003957-0178

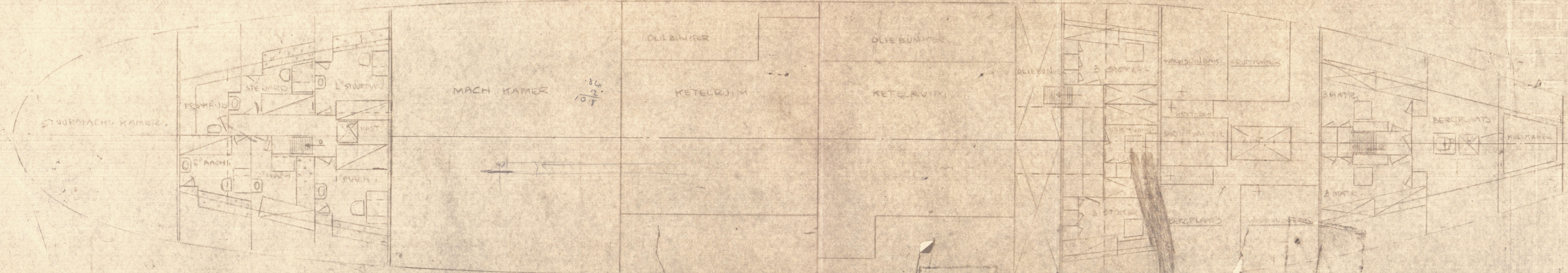


190'-0"
5'-0"
10'-9"
205'-9"

$l = 190' - 11\frac{1}{2}"$
CAMBER = $195 \frac{1}{8} \%$



75	
1263	
6237	
7.13	
7.32	
7	
51.24	7.32
25	205
41.43	5.27
7.52	41.43
10.	46.700
49.25	1.02
	47.72
1.25	25
20.45	47.97
10	
71.65	

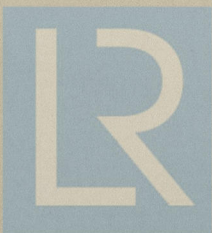


BENAMING	ONDERDEEL	MATERIAAL	BC OPMERKING 15 Sep. 1948	GEW. IN KG PER STUK	POST
SCHAAL	1/2 = 1:0	DATUM		AMST. DROOGDOK MIJ. N.V.	
GETEK.	1/2 = 1:0		WALVISCH JAGER / EX FLOWER GUNN CORSET		
GECALQ.			ALGEMEEN PLAN		
GEZIEN					
GEWIJZ.					
VOOR BEW. TEK. ZIE N 785	NIEUWBOUW		ORDER	© 2020	
TEK. No:		P. 1050 Lloyd's Register Foundation			

"Eugene Vinko"

Rudder

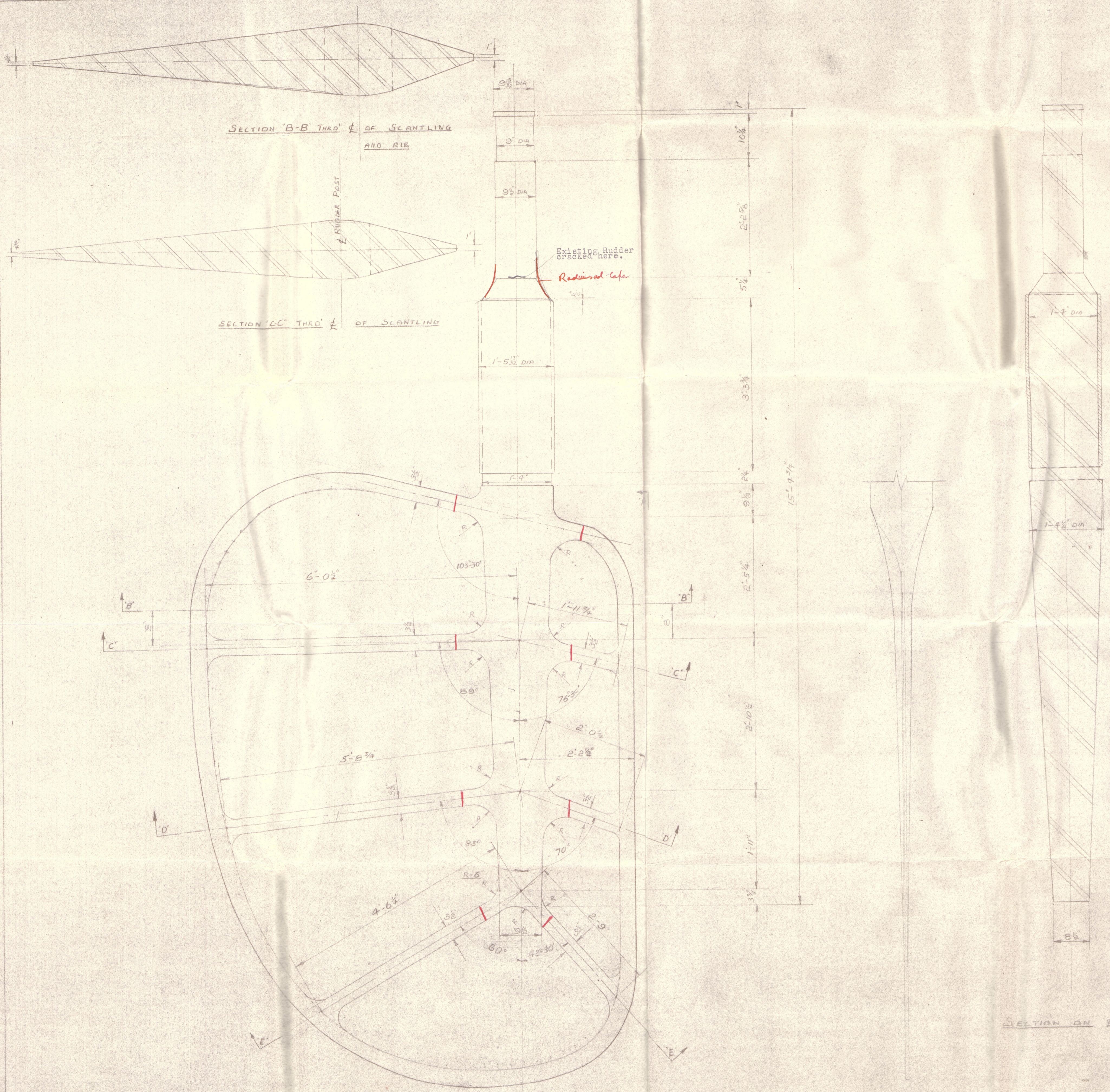
Eugene Vinko



© 2020

Lloyd's Register
Foundation

003948-003957-0196



SECTION 'B-B' THRO' OF SCANTLING AND RIB

SECTION 'C-C' THRO' OF SCANTLING

SECTION 'D-D' THRO' OF SCANTLING

SECTION 'E-E' THRO' OF SCANTLING

Existing Rudder cracked here.
Radial Cape

SECTION ON *See call*
Ad
21.8.51

View A-A on LEADING EDGE

RED LINES INDICATE PROPOSED WELD POSITIONS
NEW STOCK TUBE FORGED STEEL, AND EXISTING ARMS USED

DETAILS OF EXISTING RUDDER
ON
A.M. 10

GLOBE ENGINEERING WORKS LTD		w/o 9313
SCALE 1"=1'-0"		© 2020
DESIGNED	AJAROBERTS 16-B-51	10/16/59
DRAWN		
CHECKED		
APPROVED		

"Eugene Vire"

Rudder

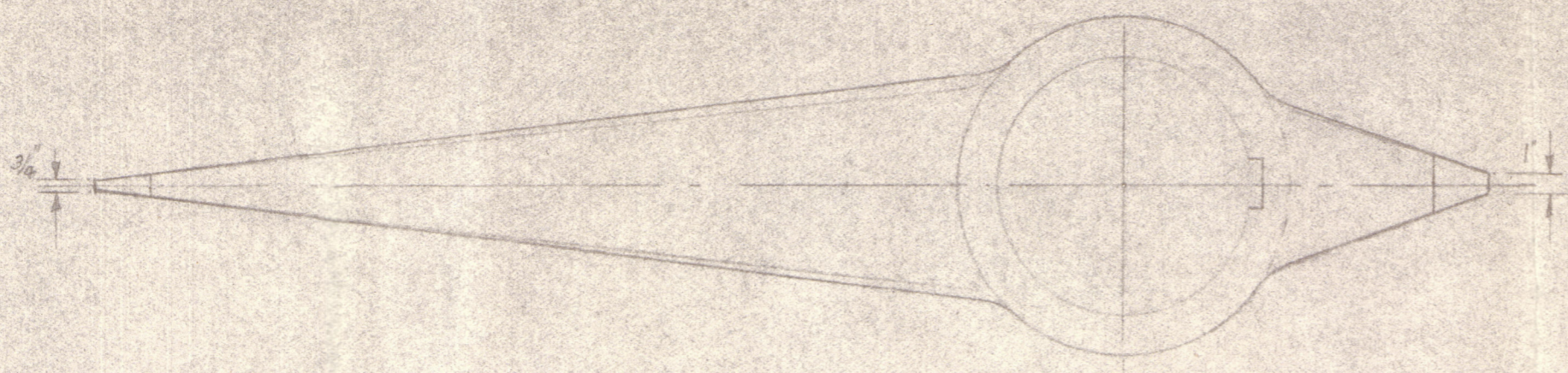
Eugene Vire



© 2020

Lloyd's Register
Foundation

003948-003957-0197

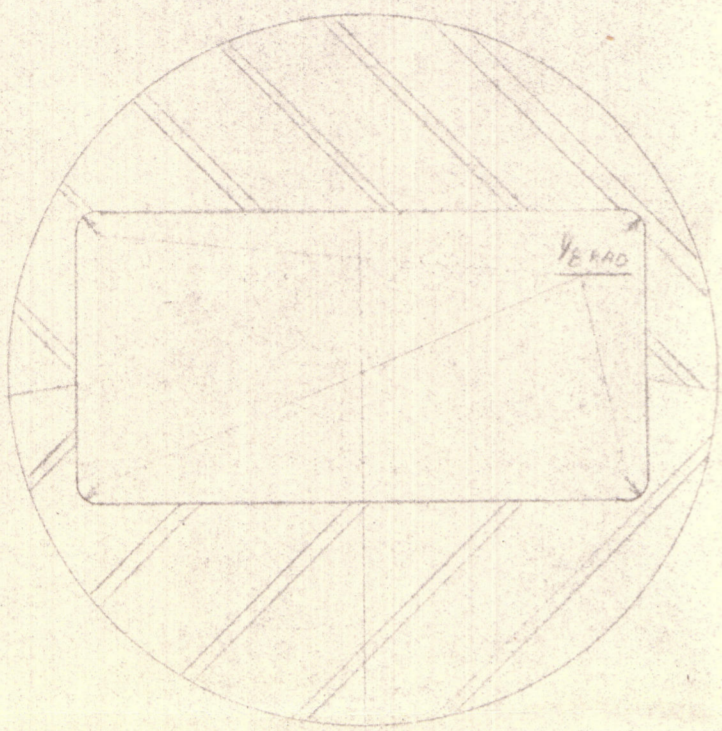


VIEW ON B-B

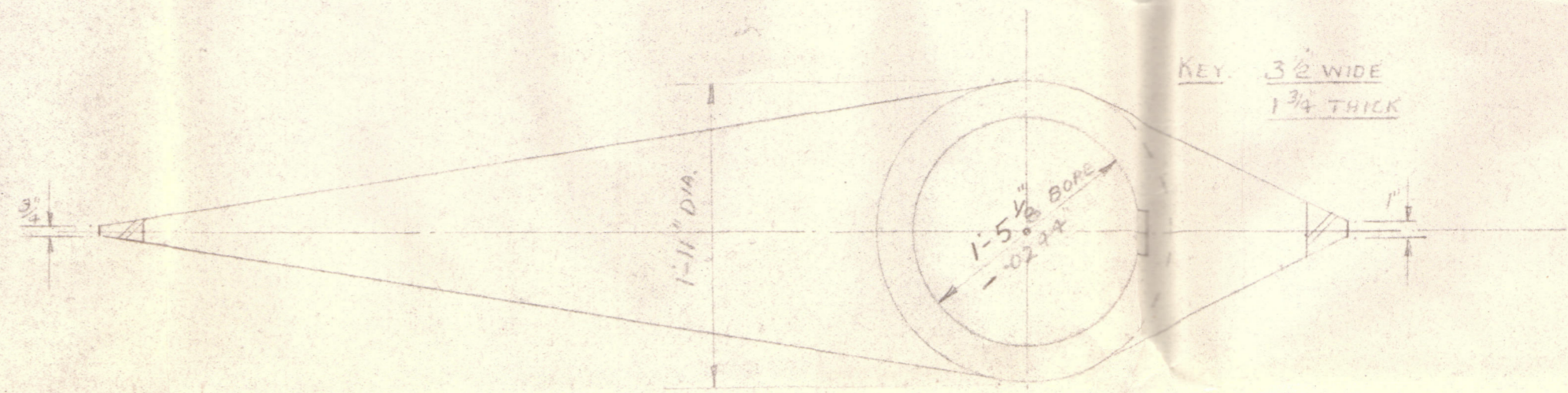
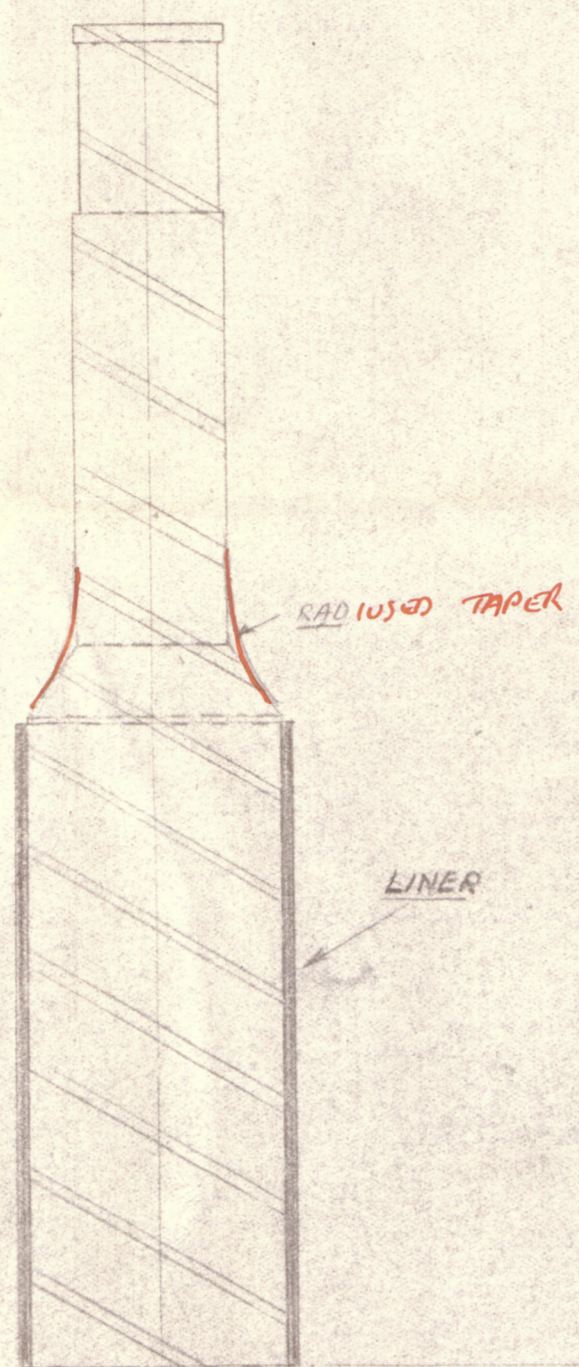
ALTERNATIVE ARMS (BOSS PARTLY OUTSIDE PLATE)



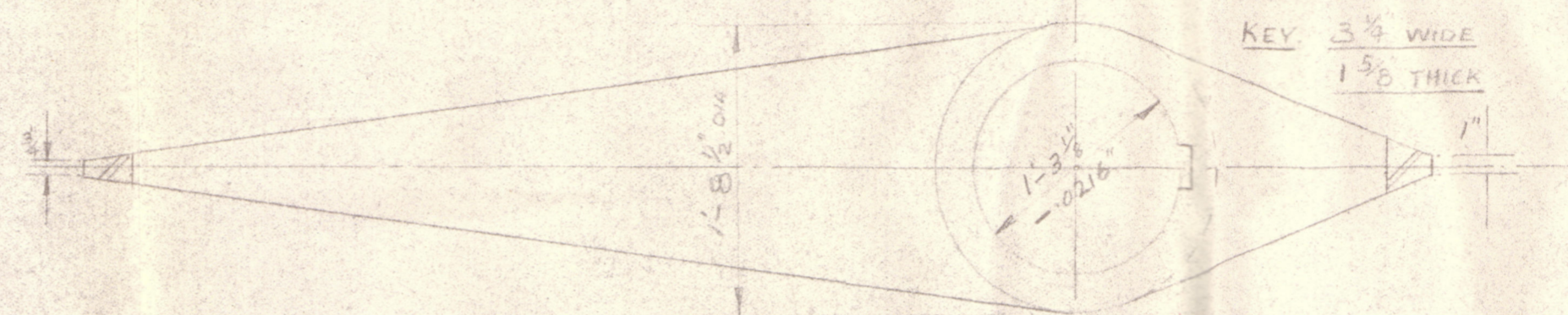
VIEW ON C-C



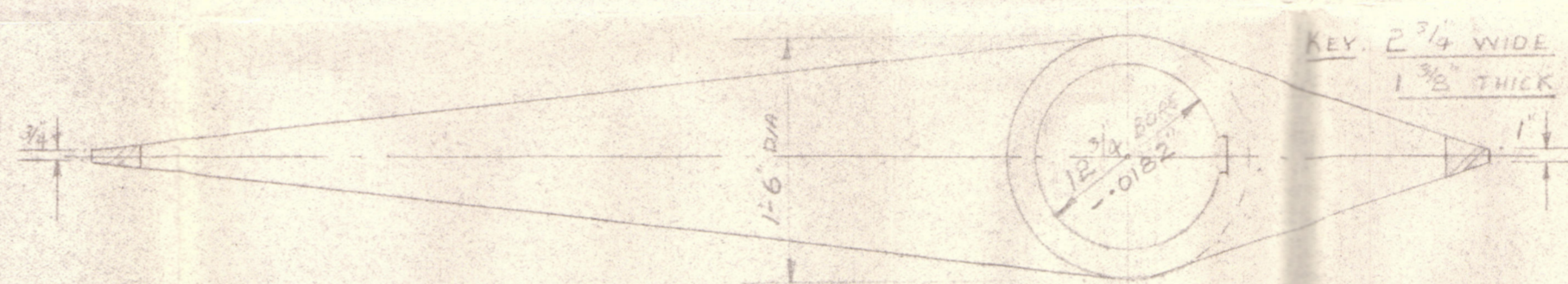
SCRAP SECTION SHOWING KEYWAY RADII FULL SIZE



VIEW ON B-B



VIEW ON C-C



VIEW ON D-D



VIEW ON E-E

IN ABOVE VIEWS STOCK OMITTED FOR CLARITY

NOTE! ALL OTHER DIMENSIONS SHOWN ON DRG 469
 SHRINKAGE ALLOWANCE BORE = STOCK DIA - 1/60 OF STOCK DIA
 BOSS DIAMETERS TAPERED DIAMETERS GIVEN ARE AT
 INTERSECTION POINTS AS SHOWN
 KEYWAYS: A RADIUS OF AT LEAST 1/8 MUST BE LEFT
 IN THE CORNERS OF ALL KEYWAYS. SEE DETAIL.
 WHERE THE TAPERED PORTION OF THE STOCK MEETS
 THE PARALLEL PART IT MUST NOT BE UNDERLUT

RED LINES INDICATE PROPOSED WELD POSITION.
 ARMS & STOCK FORGED STEEL.

See call
 21.8.51

PROPOSED ALTERATION TO
 RUDDER ON A.M. 10.

GLOBE ENGINEERING WORKS
 LTD.

DESIGNED: ATAR DEBTS
 DRAWN: ATAR DEBTS
 CHECKED:
 APPROVED:



Lloyd's Register
 Foundation